

# Leica Rugby 50 The one-button land leveling laser

Perfect for  
Agricultural  
Use!



**SITE PROOF**  
by Leica Geosystems

- when it has to be **right**

**Leica**  
Geosystems

# Leica Rugby 50

## The one-button land leveling laser

Simple, one-button operation, fully automatic, laser for agriculture applications.

Following in tradition of the Rugby family ... Rugged, reliable, accurate. The Leica Rugby 50 is the affordable "little brother" of the popular Leica Rugby 100. The Rugby 50 provides value where ever it is used.

Work gets done faster and more accurately, providing savings in labor, time and materials. As a farmer, you know the values of laser land levelers. The Rugby 50, used with a laser sensor fixed on the mast on the scraper unit, guarantees, your field is precisely leveled.

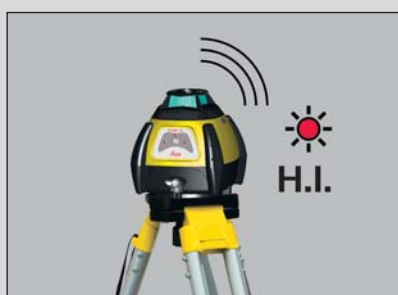


Simple, one-button operation – the Leica Rugby 50 has the features needed to get the job done



### Always automatic Always self-leveling

The Leica Rugby 50 is designed to always turn on in automatic self-leveling mode. No concerns for setting up the laser incorrectly. Set up the Leica Rugby 50 within its wide leveling range, the instrument will automatically self-level and work can begin.



### H.I. (Elevation) Alert

The H.I. or Elevation Alert function monitors the leveling of the Leica Rugby 50. Any significant disturbance or movement of the tripod will cause the alert function to activate. The Leica Rugby 50 will stop operation and will sound an alarm to prevent possible errors.



### Out of level indication

During normal operation, the Leica Rugby 50 continuously self-levels. Small vibrations and disturbances may cause an out of level condition. The head will stop momentarily and the emission LED will blink until the unit re-levels and work can resume.



### Control Panel MCP 700 Specifications

Voltage Range	12/24 V DC
System Accuracy	±2 mm (Standard Deviation)
Hydraulic O/P Settings	Directional / Proportional Valves
Water Resistant	IP65
Power On / Off Switch	
Switch for Automatic and Manual Control Mode Selection	
LED Display to show Up-Grade, On-Grade and Below-Grade position of the Laser receiver with respect to the Laser Beam	
Manually Up and Down Hydraulic switch	

### Laser Sensor MLS 700 Specifications

Voltage Range	12/24 V DC
Current Consumption	<500 mA
Laser Requirement	All rotating Lasers (HeNe or IR)
LED Display to show Up-Grade, On-Grade and Below-Grade position of the Laser receiver with respect to the Laser Beam	
Water Resistant	IP68
Pulsed Display	5 Pulses per second
Accuracy Dead Band	5 User Selectable Accuracy Dead Bands

### Leica Rugby 50 Specifications

Operating Range*	800 m Diameter
Self-leveling Accuracy**	±2.6 mm at 30 m (±3/32" at 100 ft)
Self-leveling Range	±5°
Rotating Speeds	10 rps (600 rpm)
Laser Diode (type)	780 nm (infrared)
Dimensions (HWD)	158 x 163 x 166 mm (6.2 x 6.4 x 6.5")
Weight with Batteries	1.85 kg (4.0 lbs)
Battery Type	Two D-cells or NiMH pack
Battery Life***	Alkaline: 60 hours NiMH: 35 hours
Operating Temperature	-20 to +50° C (-4° F to +122° F)
Storage Temperature	-40 to +70° C (-40° F to +158° F)
Dust / water (IEC60529)	IP55

\* In average (agriculture) conditions & 300 m in poor (construction site) conditions  
 \*\* Accuracy is defined at 25° C  
 \*\*\* Battery life is dependent upon environmental conditions.

### Features:

- Simple, one-button operation
- High impact composite housing
- Fully sealed with enclosed head
- Watertight for all conditions
- Long battery life
- H.I. (Elevation) Alert protection
- Low battery indicator
- Optional alkaline or NiMH batteries
- Class 1 Laser Product

### Advantages of laser land leveling over traditional land leveling:

- Precise level and smoother soil surface, easy land preparation
- Reduction in time and water required to irrigate the field
- Uniform distribution of water in the field, less water consumption
- Uniform moisture environment for crops, less weed problems
- Good germination and growth of crop, uniformity in crop maturity
- Reduce seed rate, fertilizer, chemicals, and fuel requirements
- Improve field traffic ability for the subsequent field operations

### Benefits of precise land leveling:

- Saves irrigation water up to 35%
- Reduced weed in agriculture field
- Increase in farming area up to 3.5%
- Increase in productivity up to 50%
- Reduced farm operating time by 10%
- Assist top soil management
- Saves fuel/electricity used in irrigation
- Saves labor cost

### The Leica Rugby 50 Package

A recommended package consists of the Leica Rugby 50, Carrying Case, Rod-Eye Receiver and either Alkaline or rechargeable NiMH Battery Pack.



Whether you have to precisely layout a construction site, perform control measurements, collect height and angle data, align concrete forms, install ceilings and partitions, lay gravity flow pipe, locate underground services or complete site preparation and earthworks – Leica Geosystems offers the right instrument, construction laser or machine control installation specifically designed for your construction application.

Easy-to-use, jobsite tough, accurate and reliable – Leica Geosystems instruments and lasers ensure the efficient use of your materials and resources. High quality products, such as optical and electronic levels, construction lasers, total stations and machine automation systems, provide fast results, keep you working and increase your profitability.

**When it has to be right.**

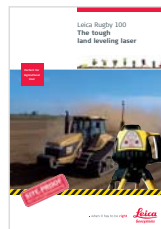
Illustrations, descriptions and technical data are not binding. All rights reserved.  
Copyright Leica Geosystems AG, Heerbrugg, Switzerland, 2008.



**Total Quality Management – our commitment to total customer satisfaction.**

Ask your local Leica Geosystems dealer for more information about our TQM program.

**R50 (Art. No.:753672):**  
Laser class 1 in accordance with IEC 60825-1 and EN 60825-1



**Leica Rugby 100**  
The tough  
land leveling laser



**Leica Rugby 100LR**  
The long range  
land leveling laser



**Leica Rugby 300 SG & 400 LG**



**Leica PowerBlade**  
Automated  
Grading System